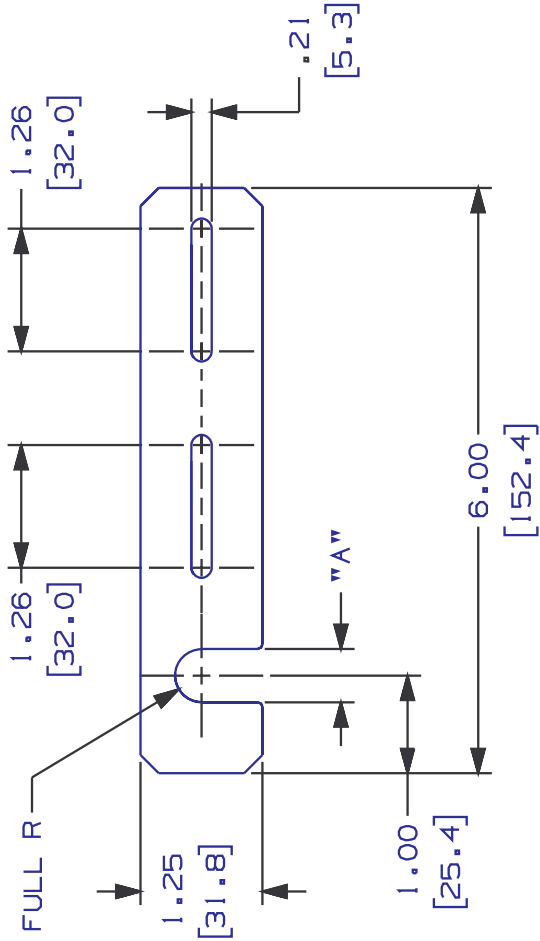


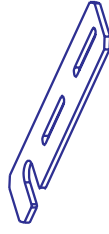
THIS COPY IS PROVIDED ON A RESTRICTED BASIS AND IS NOT TO BE USED IN ANY WAY DETRIMENTAL TO THE INTERESTS OF PANDUIT CORP.

PANDUIT P/N	"A"	WEIGHT
FTRBE12	.54 (13.7)	5.4 LB/10 PCS. (2430 G/10 PCS.)
FTRBE12M	.54 (13.7)	5.4 LB/10 PCS. (2430 G/10 PCS.)
FTRBE58	.65 (16.5)	5.3 LB/10 PCS. (2410 G/10 PCS.)



NOTES:

- SEE CURRENT CATALOG FOR ADDITIONAL PART SUFFIXES TO INDICATE COLOR AND OR PACKAGE QUANTITY.
- BRACKET ATTACHES TO EXISTING 1/2", 5/8", OR 12mm THREADED ROD (NOT INCLUDED).
- FTRBE12 AND FTRBE58 KITS CONTAIN ONE BRACKET AND TWO 10-32 x 1/2" PANHEAD SCREWS WITH LOCKWASHERS AND HEX NUTS, AND TWO 1/2" OR 5/8" SPLIT NUTS.
- FTRBE12M KIT CONTAINS ONE BRACKET, TWO M5X0.8X16mm PANHEAD MACHINE SCREWS WITH HEX NUTS AND LOCKWASHERS, AND TWO 12mm SPLIT NUTS.
- DIMENSIONS IN PARENTHESIS ARE IN METRIC.



CAD FILENAME/LAYERS

D35245B0\_DC\_FTRBE\_01.PRT

PANDUIT

CORP. TINLEY PARK, ILLINOIS

FIBER-DUCT BRACKET KIT (WITH EXISTING ROD)  
(FTRBE12, FTRBE12M, FTRBE58)  
CUSTOMER DRAWING

UNLESS OTHERWISE SPECIFIED,  
DIMENSIONAL TOLERANCES ARE:  
(.XX) ± .04 (1.0) ANGLES ±

UNLESS OTHERWISE SPECIFIED,  
ALL DIMENSIONS ARE GIVEN  
IN INCHES, THIRD ANGLE PROJECTION.

DRAWN BY MAT'L:

SCALE NONE

11 GAGE  
C.R.S.

DRAWING NO.

DWG  
A  
SIZE

1 1-19-99 DWG C: REVISED NOTE 3; D. ADDED FTRBE12M, NOTE 4.  
A. ADDED FTRBE12M PART; B. ADDED 12mm TO NOTE 2.

R 11-20-96 TPC CEF RELEASED TO PRODUCTION

REV DATE BY CHK

DESCRIPTION

ECN - R CUST SUP

11-20-96 CEF CEF

35245-15

35245-15

A  
SIZE